

301 | Budget Roll-up, single sided

TECHNICAL GUIDE

We recommend

200-280 g polyester banner material

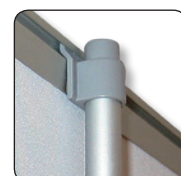
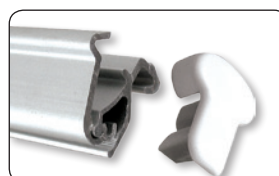
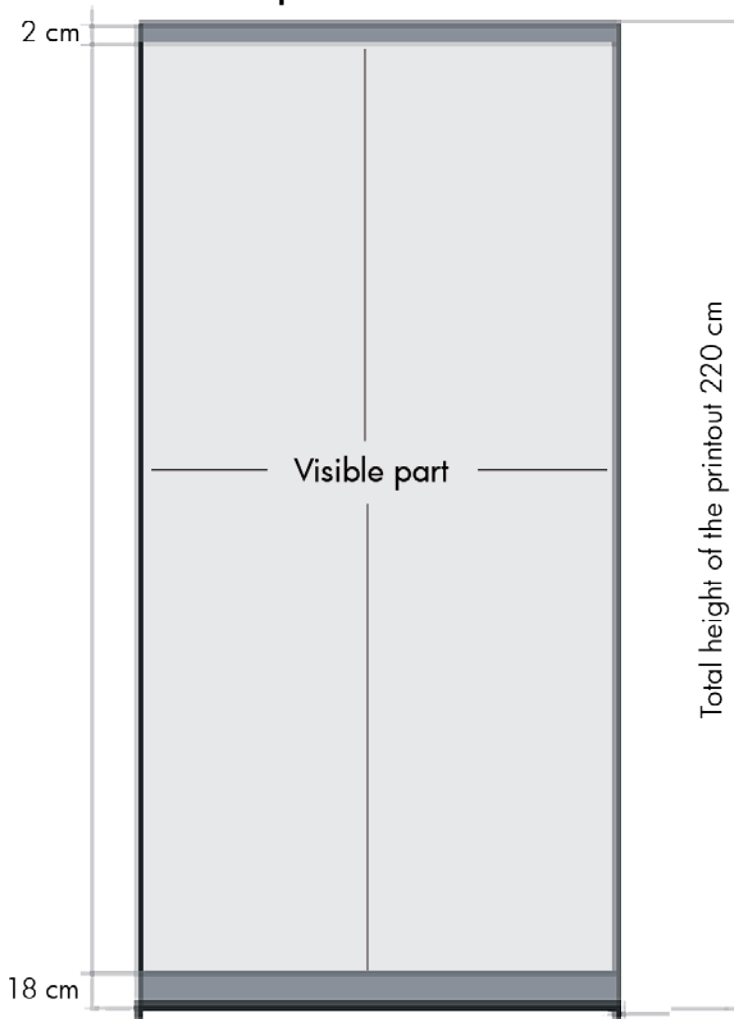


🇬🇧 Lightweight roll-up with 1/2 flexible feet*. Produced in silver anodized aluminum. Aluminum and quality as Basic Roll-up, however with plastic bottom roll and bag without padding. Top profile with clamp and tape on the bottom roll makes mounting easy. New tape must be mounted when changing the banner. Black bag incl. 6 units / carton.

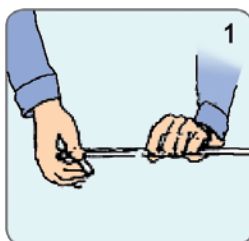
🇩🇪 Einseitiger, leichtes Roll-up aus silbereloxiertem Aluminium mit 1/2 Stellfüsse*. Aluminium und Qualität wie beim Basic, jedoch mit Kunststoffrolle und Tasche ohne Polsterung. Klemmleiste oben und Klebeband auf der Rolle ermöglicht eine einfache Montage des Banners. Beim Austausch des Banners muss neues Klebeband montiert werden. Schwarzer Tragetasche inkl. 6 Stück pro Karton.

🇩🇰 Enkelt-sided letvægts roll-up i sølv-eloxeret aluminium med 1/2 fødder*. Samme alutykkelse og kvalitet som Basic, dog med plast bundrulle og taske uden polstring. Topprofil med klemmleiste, samt tape på bundrulle gør det er let at montere banneret. Ved udskiftning af budskab skal ny tape monteres. Leve-res i sort stoftaske. Pakket m. 6 stk. pr. karton.

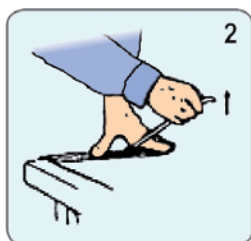
Graphic dimensions:



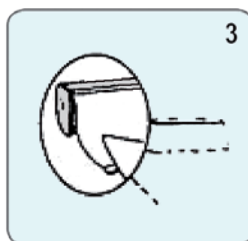
Installation instruction



1 Turn image with picture side facing downwards. Peel back a small amount of protective strip on the top profile.



2 Place the top profile against the upper edge of the image and remove the protective strip. Press firmly.



3 Remove the white protective strip. Apply the image with picture side facing upwards. Follow the black line. Apply extra tape over the joint on both sides.



4 Press the image with a firm grip against the tube with left hand. Remove the locking pin. Note: The mechanism is now activated.



5 Hold the image with both hands according to sketch. Let the image carefully roll into the tube. Place the pin in the clip under the tube.

Art.no.	Banner size	Visible Banner	Feet*	Colour	Total W x H	Package size and weight	Pallet size and quantity
4549	60 x 220 cm	60 x 200 cm	1 pc.	Alu	62 x 212 cm	12 x 65 x 12 cm 2,5 kg	80 x 120 x 220 cm 156 pcs.
4550	80 x 220 cm	80 x 200 cm	2 pcs.	-	82 x 212 cm	12 x 85 x 12 cm 3,0 kg	80 x 120 x 220 cm 132 pcs.
4557	85 x 220 cm	85 x 200 cm	2 pcs.	-	87 x 212 cm	12 x 90 x 12 cm 3,5 kg	80 x 120 x 220 cm 120 pcs.
4506	Spotlight 50W			-		8 x 7 x 46 cm 0,4 kg	80 x 120 x 220 cm 400 pcs.